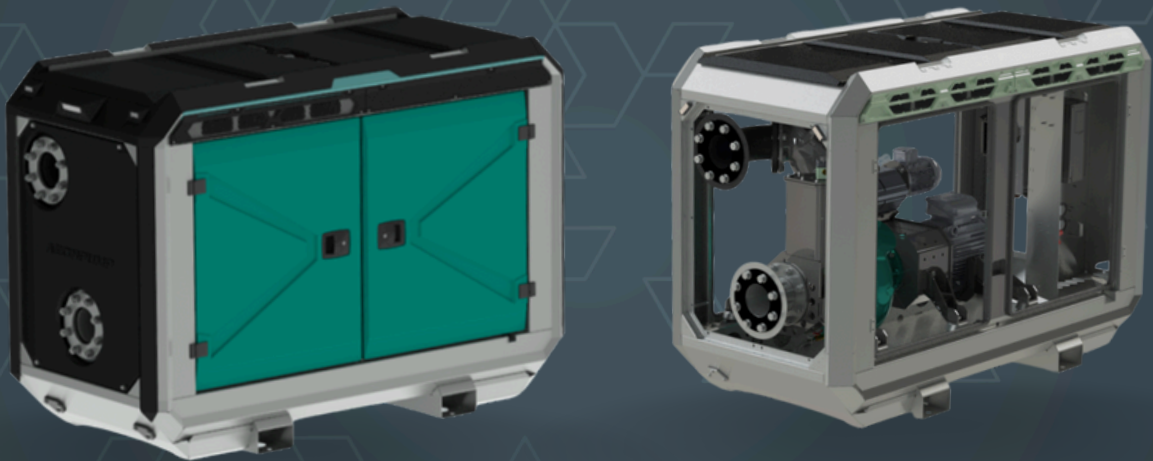


AEDONPUMP

RAPTOR 6E HEAVY



ELECTRICALLY

**DRIVEN SEWAGE
AND DEWATERING PUMP**

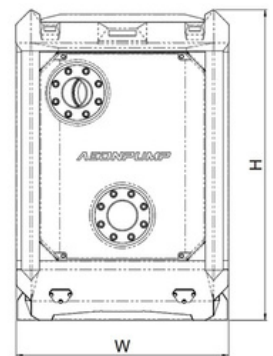
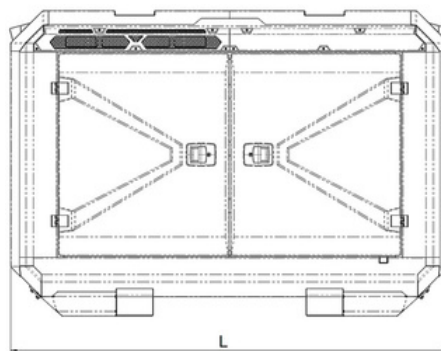
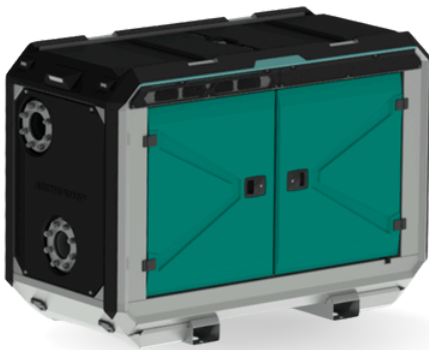
FEATURES AND COMPETITIVE EDGE

Type: **Raptor 6E Heavy**
Connection size: **6 in x 6 in**

Frame LxWxH: **2299x1100x1601 mm /**
90.51x43.31x63.03 in
Dry weight: **1150 kg / 2540 lbs**

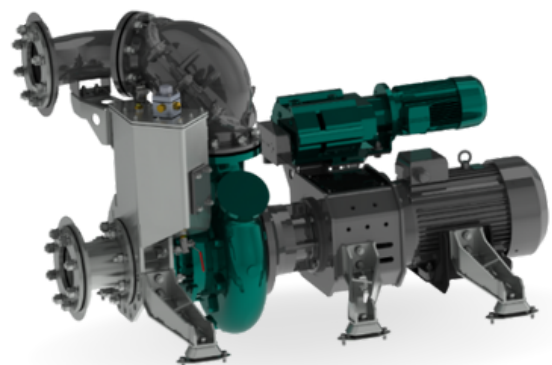
Designed for heavy duty applications.
Sewage bypass, drainage and dewatering:

- Extended maintenance intervals;
- High-grade parts of superior quality;
- Online telemetry and remote access capability;
- Unsurpassed efficiency values that set the industry standard.



PUMP TECHNICAL SPECIFICATION

Pump Pump type: **E06R-HMN1R**
Max. flow: **450 m³/h / 1980 US gpm**
Max. head: **38 m / 125 ft / 54 PSI**
Impeller type: **Screw impeller**
Solids handling: **100 mm / 3.94 in**
Temperature: **max. 40°C / max 104°F**
Wear Ring: **GG20 (0.6020)**
Shaft: **1.4021**
Shaft Sealing: **WC/SiC/NBR**
O-Rings: **NBR**
Casing: **GG25 (0.6025)**
Impeller: **GGG60 (0.7060)**
Suction Liner: **GG20 (0.6020)**
Suction liner adjustable by external regulation screws.





Electrical Motor Power: **18.5 kW / 24.81 hp**
Rated Voltage: **400/690V 50/60 Hz**
4-pole: **1700 rpm**



Priming System Pump type: **dry claw vacuum pump**
Air handling capacity: **60 m3/h / 35 CFM**
Max. vacuum: **9.0 m / 30 ft**
Electric motor: **1.3 kW / 1.74 hp**
Floatbox: **Hot dip galvanized Steel**
Non-return valve: **Ductile iron GJS400**
Check valve ball: **Rubber NBR**



ELECTRICAL MOTOR CONTROLLER OPTIONS

Standard Frequency converter

AEONPUMP Software
Automatic level control
Two float switches
Hydrostatic level sensor *
SMS alarm system *
Online telemetry *

*Optional



Retro Star Delta

Dual float switch
Phase control
Hour meter
Socket 63 A



FRAME OPTIONS

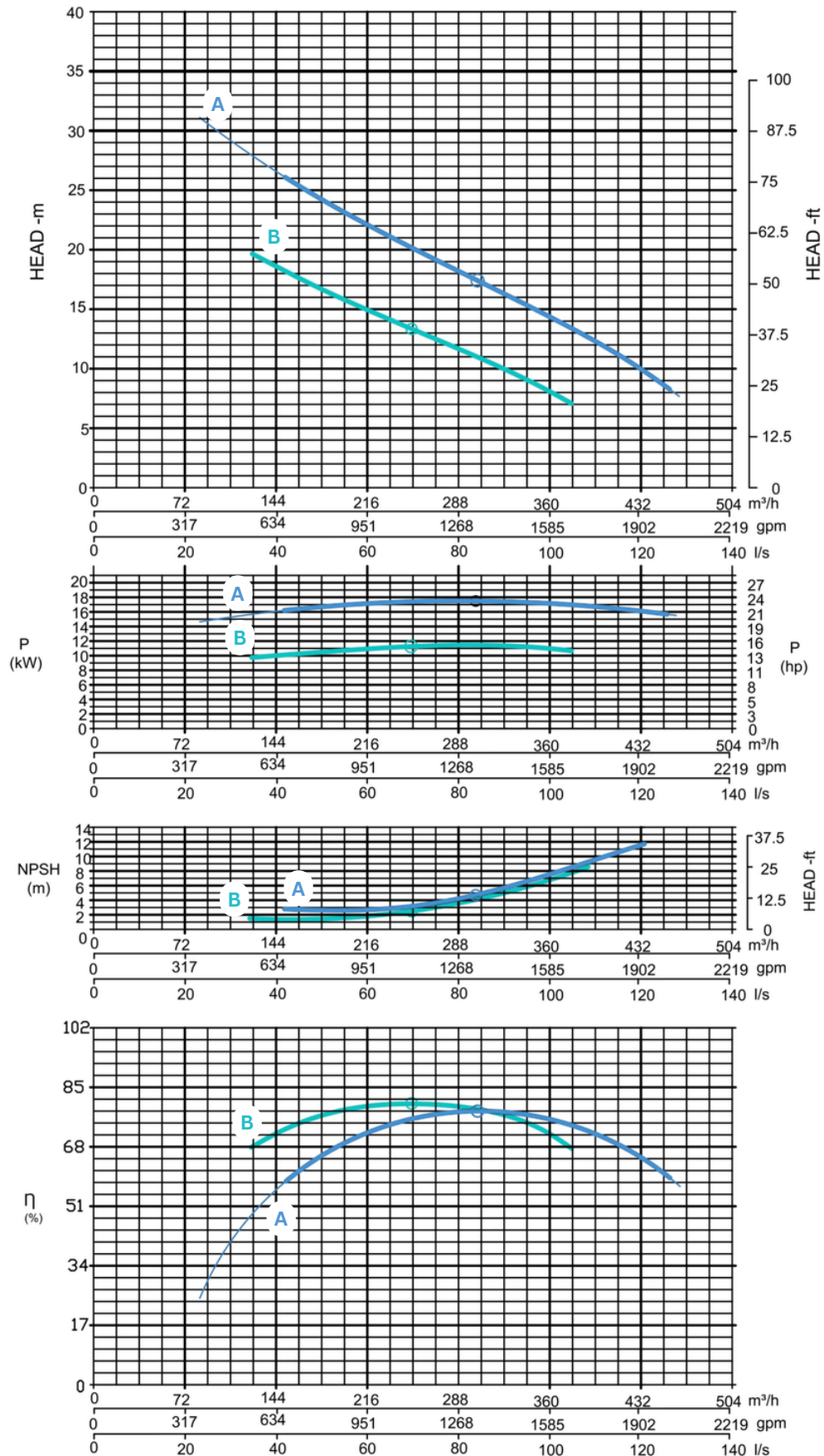
Silent Canopy Canopy type: **Stackable**
Material: **Hot dip galvanized steel**
Dimensions LxWxH: **2299x1100x1601 mm / 90.51x43.31x63.03 in**
Lifting point: **Single lifting point**
Forklift pockets: **Installed**



Open Canopy Canopy type: **Stackable**
Material: **Hot dip galvanized steel**
Dimensions LxWxH: **2299x1100x1601 mm / 90.51x43.31x63.03 in**
Lifting point: **Single lifting point**
Forklift pockets: **Installed**



Curves at Speeds: **A 1700 rpm** **B 1474 rpm**



Note: Pump power P include mechanical seal friction and bearing frame losses, from a run in bearing frame.
(Testing according ISO 9906:2012-38)