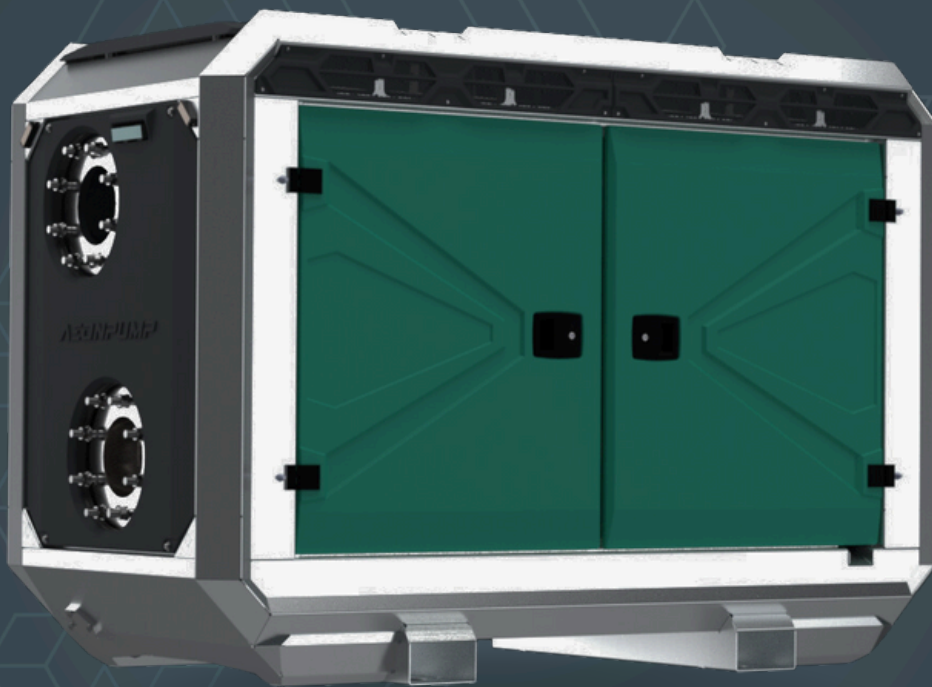


AEDONPUMP

RAPTOR 8D



DIESEL

**DRIVEN SEWAGE
AND DEWATERING PUMP**

V1.25

FEATURES AND COMPETITIVE EDGE

Type: **Raptor 8D**

Connection size: **8 in x 8 in**

Frame LxWxH: **2299x1100x1601 mm /**

90.51x43.31x63.03 in

Dry weight: **1950 kg / 4300 lbs**

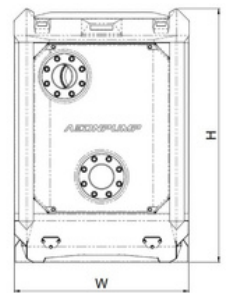
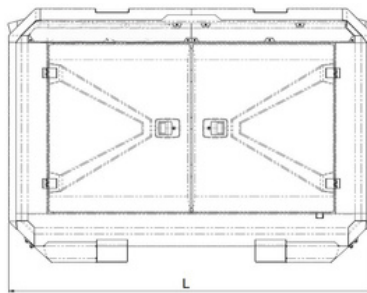
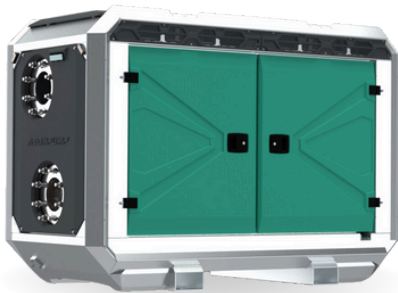
Fuel tank capacity: **270 L / 71 US gal**

Sound level: **73 dB at 10 m / at 33 ft**

Designed for heavy duty applications.

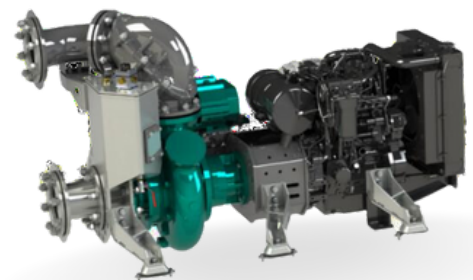
Sewage bypass, drainage and dewatering:

- Extended maintenance intervals;
- High-grade parts of superior quality;
- Online telemetry and remote access capability;
- Unsurpassed efficiency values that set the industry standard.



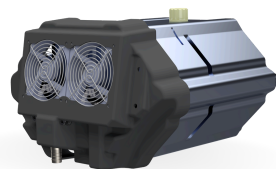
PUMP TECHNICAL SPECIFICATION

Pump Max. flow: **600 m³/h / 2640 gpm**
Max. head: **44 m / 144 ft / 63 PSI**
Impeller type: **Screw impeller**
Solids handling: **115 mm / 4.53 in**
Temperature: max. **40°C / max 104°F**
Casing: **GG25 (0.6025)**
Impeller: **GGG60 (0.7060)**
Suction Liner: **GG20 (0.6020)**
Wear Ring: **GG20 (0.6020)**
Shaft: **1.4021**
Shaft sealing: **WC/SiC/NBR**
O-Rings: **NBR**
Suction liner adjustable by external regulation screws





Priming System Pump type: **dry claw vacuum pump**
Air handling capacity: **60 m³/h / 35 CFM**
Max. vacuum: **9.0 m / 30 ft**
Floatbox: **Hot dip galvanized Steel**
Non-return valve: **Ductile iron GJS400**
Check valve ball: **Rubber NBR**

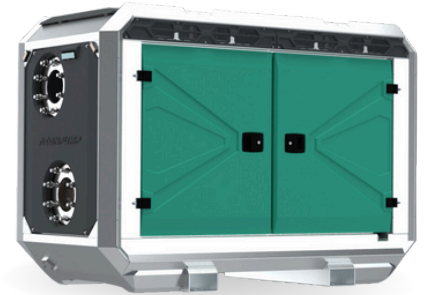


ENGINE OPTIONS

Standard Model: **Hatz 4H50TICD**
Emission standard: **Stage V/ Tier 4F/ Stage III**
Cylinders: **4**
Displacement: **1.952 L / 119.12 cu.in.**
Aspiration **Turbocharged**
Bore and stroke mm: **84 x 88 Inches / 3.31x3.46 in**
Maximum power: **28 kW / 37.55 hp @1700 rpm**
Variable speed: **1500 - 1700 rpm**
Combustion system: **High-pressure common rail direct injection**
Exhaust after treatment: **cEGR, DOC, DPF**



FRAME OPTIONS

Silent canopyCanopy type: **Stackable**Material: **Hot dip galvanized Steel**Dimensions LxWxH: **2299x1100x1601 mm / 90.51x43.31x63.03 in**Lifting point: **Single lifting point**Forklift pockets: **Installed****Open canopy**Canopy type: **Stackable**Material: **Hot dip galvanized Steel**Dimensions LxWxH: **2299x1100x1601 mm / 90.51x43.31x63.03 in**Lifting point: **Single lifting point**Forklift pockets: **Installed**

CONTROL PANEL OPTIONS

Standard

AEONPUMP Software

Automatic level control

Hydrostatic level sensor*

SMS alarm system*

Online telemetry*

Dual float switch

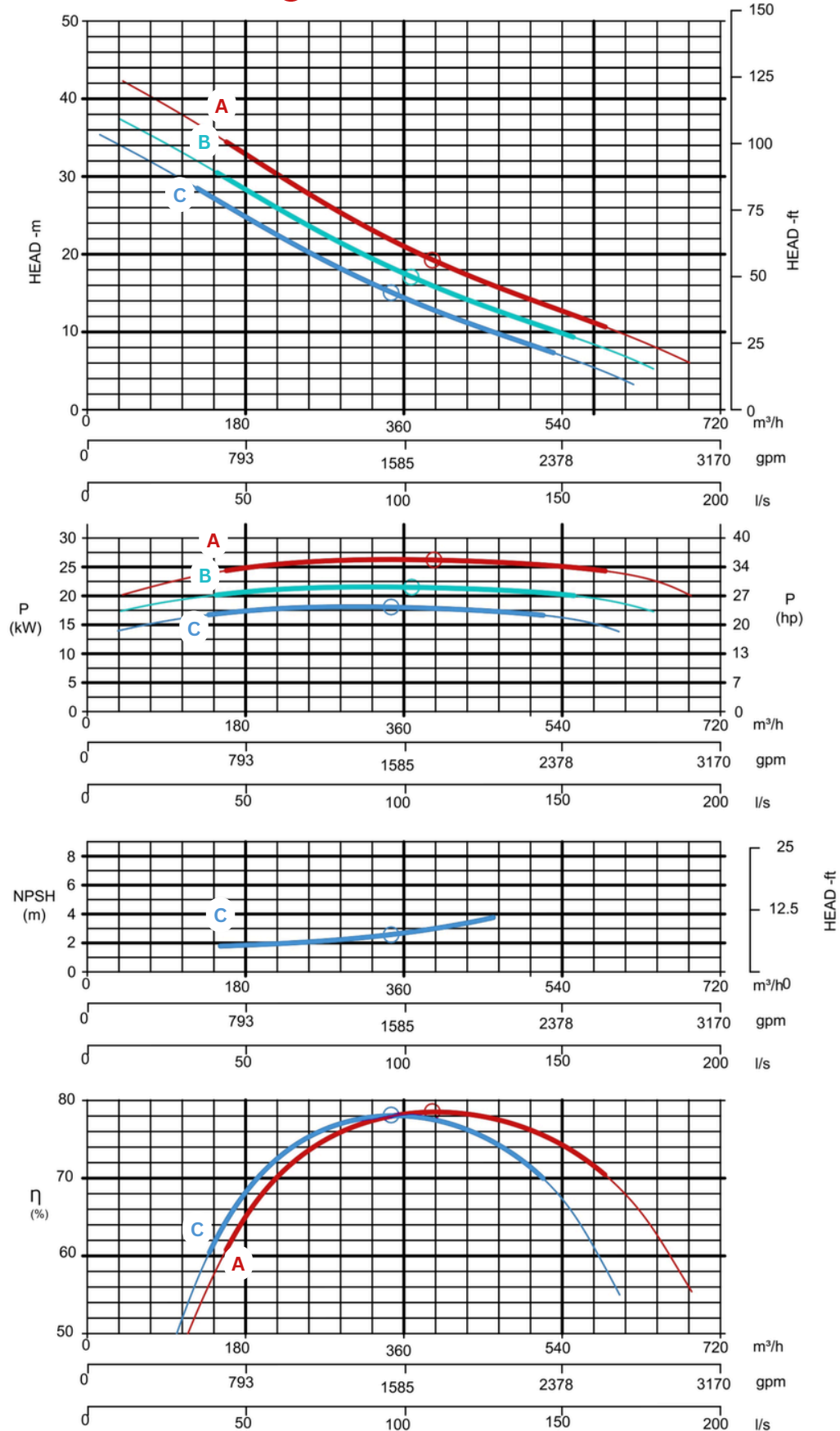
Light Assistant*

* Optional





Curves at Speeds: **A 1700 rpm** **B 1600 rpm** **C 1500 rpm**



Note: Pump power P include mechanical seal friction and bearing frame losses, from a run in bearing frame.
(Testing according ISO 9906:2012-38)