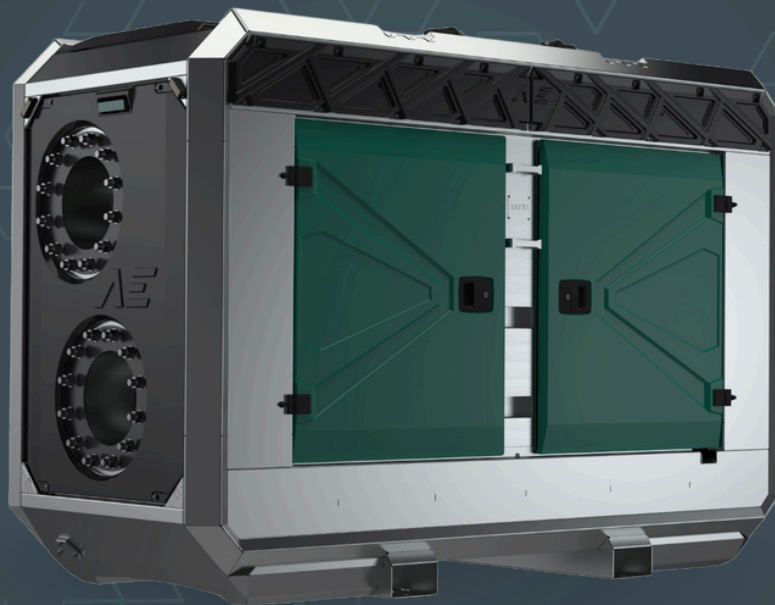


**AEDONPUMP**

# RAPTOR 8D HEAVY



**DIESEL**

**DRIVEN SEWAGE  
AND DEWATERING PUMP**

## FEATURES AND COMPETITIVE EDGE

Type: **Raptor 8D HEAVY**  
Connection size: **8 in x 8 in**

Frame LxWxH: **2700x1150x1820 mm / 106.3x45.3x71.7 in**  
Dry weight: **1950 kg / 4300 lbs**  
Fuel tank capacity: **400 L / 106 US gal**  
Sound level: **76 dB at 10 m / 33 ft**

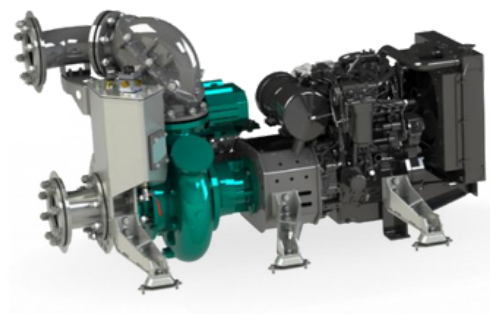
**Designed for heavy duty applications.**  
**Sewage bypass, drainage and dewatering:**

- Extended maintenance intervals;
- High-grade parts of superior quality;
- Online telemetry and remote access capability;
- Unsurpassed efficiency values that set the industry standard.



## PUMP TECHNICAL SPECIFICATION

**Pump** Max. flow: **720 m<sup>3</sup>/h / 3170 US gpm**  
Max. head: **52 m / 170 ft / 74 PSI**  
Impeller type: **Screw impeller**  
Solids handling: **115 mm / 4.5 in**  
Temperature: **max. 40°C / 104°F**  
Casing: **GG25 (0.6025)**  
Impeller: **GGG60 (0.7060)**  
Suction Liner: **GG20 (0.6020)**  
Wear Ring: **GG20 (0.6020)**  
Shaft: **1.4021**  
Shaft Sealing: **WC/SiC/NBR**  
O-Rings: **NBR**  
Suction liner adjustable by external regulation screws





**Priming System** Pump type: **dry claw vacuum pump**  
Air handling capacity: **60 m<sup>3</sup>/h / 35 CFM**  
Max. vacuum: **9.0 m / 30 ft**  
Floatbox: **Hot dip galvanized Steel**  
Non-return valve: **Ductile iron GJS400**  
Check valve ball: **Rubber NBR**



## ENGINE OPTIONS

**Standard** Model: **Hatz 4H50TICD/ Hatz 4H50TIC**  
Emission standard: **Stage V/ Tier 4F**  
Cylinders: **4**  
Displacement: **1.952 L / 119.12 cu.in.**  
Aspiration **Turbocharged charge air cooling**  
Bore and stroke mm: **84 x 88 / 3.31x3.46 in**  
Maximum power: **45 kW / 60.35 hp @1700 rpm**  
Variable speed: **1500 - 1700 rpm**  
Combustion system: **Direct injection**  
Exhaust after treatment: **DOC, DPF**



## FRAME OPTIONS

### **Silent canopy**

Canopy type: **Stackable**  
Material: **Hot dip galvanized Steel**  
Dimensions LxWxH: **2700x1150x1820 mm / 106.3x45.3x71.7 in**  
Lifting point: **Single lifting point**  
Forklift pockets: **Installed**

---



### **Open canopy**

Canopy type: **Stackable**  
Material: **Hot dip galvanized Steel**  
Dimensions LxWxH: **2700x1150x1820 mm / 106.3x45.3x71.7 in**  
Lifting point: **Single lifting point**  
Forklift pockets: **Installed**



## CONTROL PANEL OPTIONS

### **Standard**

AEONPUMP Software  
Automatic level control  
Hydrostatic level sensor\*  
SMS alarm system\*  
Online telemetry\*  
Dual float switch  
Light Assistant\*

\* Optional

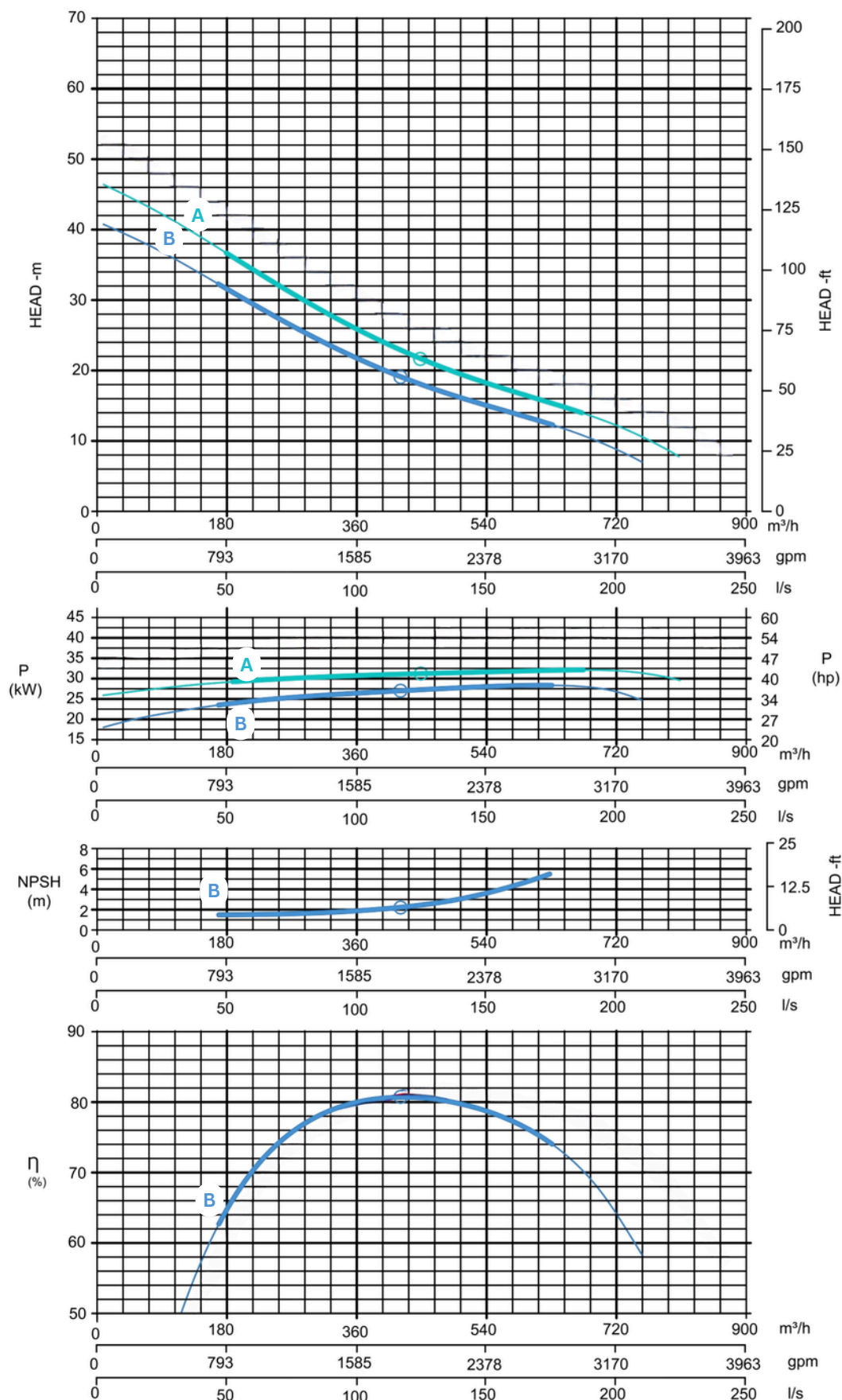




### Curves at Speeds:

**A** 1600 rpm

**B** 1500 rpm



Note: Pump power P include mechanical seal friction and bearing frame losses, from a run in bearing frame.  
(Testing according ISO 9906:2012-38)