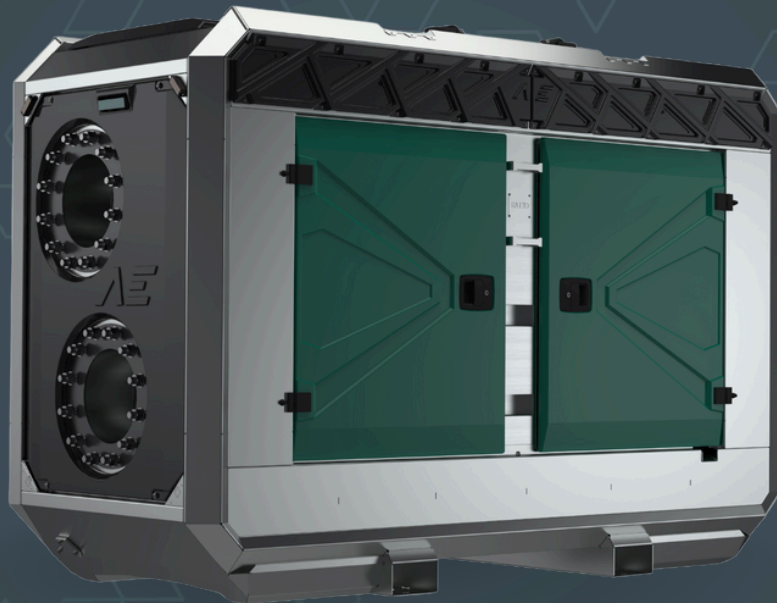


AEDONPUMP

RAPTOR 8D HEAVY



DIESEL

**DRIVEN SEWAGE
AND DEWATERING PUMP**

FEATURES AND COMPETITIVE EDGE

Type: **Raptor 8D HEAVY**
Connection size: **8 in x 8 in**

Frame LxWxH: **2700x1150x1820 mm / 106.3x45.3x71.7 in**
Dry weight: **1950 kg / 4300 lbs**
Fuel tank capacity: **400 L / 106 US gal**
Sound level: **76 dB at 10 m / 33 ft**

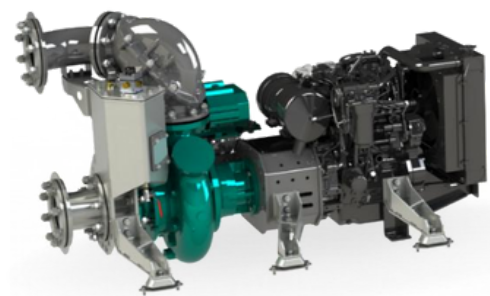
Designed for heavy duty applications.
Sewage bypass, drainage and dewatering:

- Extended maintenance intervals;
- High-grade parts of superior quality;
- Online telemetry and remote access capability;
- Unsurpassed efficiency values that set the industry standard.



PUMP TECHNICAL SPECIFICATION

Pump Max. flow: **720 m³/h / 3170 US gpm**
Max. head: **52 m / 171 ft / 74 PSI**
Impeller type: **Screw impeller**
Solids handling: **115 mm / 4.5 in**
Temperature: **max. 40°C / max 104°F**
Casing: **GG25 (0.6025)**
Impeller: **GGG60 (0.7060)**
Suction Liner: **GG20 (0.6020)**
Wear Ring: **GG20 (0.6020)**
Shaft: **1.4021**
Shaft Sealing: **WC/SiC/NBR**
O-Rings: **NBR**
Suction liner adjustable by external regulation screws



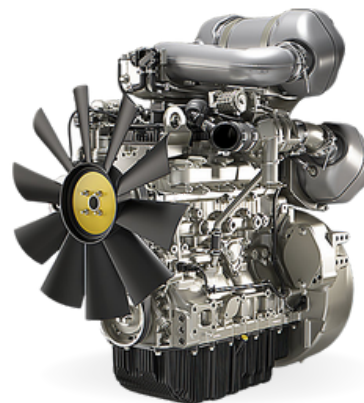


Priming System Pump type: **dry claw vacuum pump**
Air handling capacity: **60 m³/h / 35 CFM**
Max. vacuum: **9.0 m / 30 ft**
Floatbox: **Hot dip galvanized Steel**
Non-return valve: **Ductile iron GJS400**
Check valve ball: **Rubber NBR**



ENGINE OPTIONS

Standard Model: **Perkins 904J-E36TA**
Emission standard: **Stage V/ Tier 4F**
Cylinders: **4**
Displacement: **3.6 L / 220 cu.in.**
Aspiration: **Turbocharged charge air cooling**
Bore and stroke mm: **98 x 120 / 3.86 x 4.72 in**
Maximum power: **45 kW / 60.35 hp @1700 rpm**
Variable speed: **1500 - 1700 rpm**
Combustion system: **Direct injection**
Exhaust after treatment: **DOC, DPF**



FRAME OPTIONS

Silent canopy

Canopy type: **Stackable**

Material: **Hot dip galvanized Steel**

Dimensions LxWxH: **2700x1150x1820 mm / 106.3x45.3x71.7 in**

Lifting point: **Single lifting point**

Forklift pockets: **Installed**



Open canopy

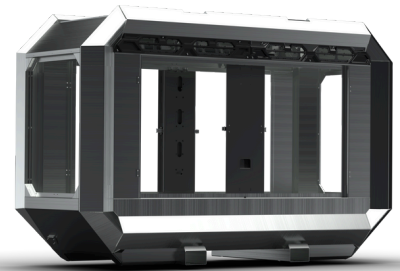
Canopy type: **Stackable**

Material: **Hot dip galvanized Steel**

Dimensions LxWxH: **2700x1150x1820 mm / 106.3x45.3x71.7 in**

Lifting point: **Single lifting point**

Forklift pockets: **Installed**



CONTROL PANEL OPTIONS

Standard

AEONPUMP Software

Automatic level control

Hydrostatic level sensor*

SMS alarm system*

Online telemetry*

Dual float switch

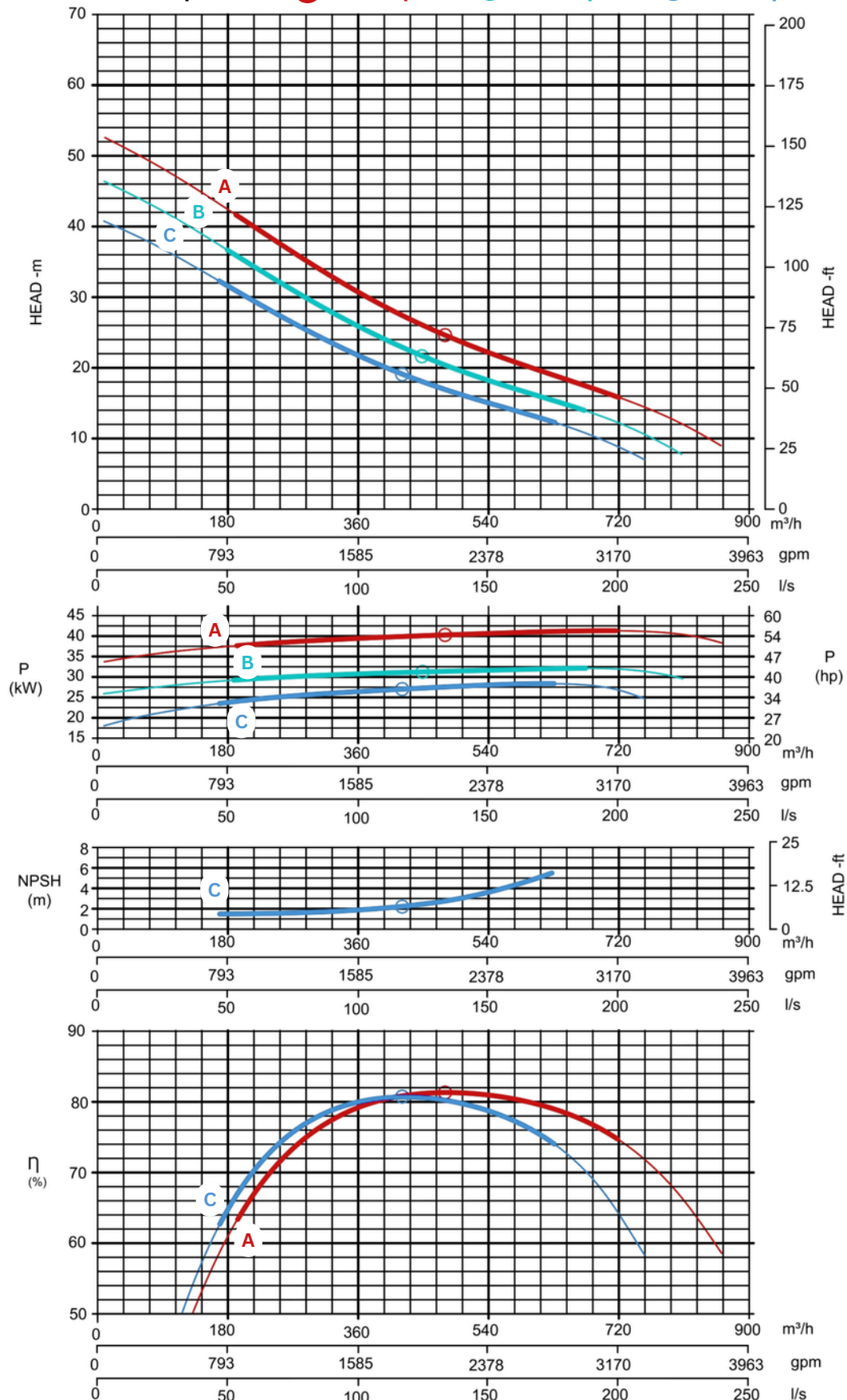
Light Assistant*

* Optional





Curves at Speeds: **A** 1700 rpm **B** 1600 rpm **C** 1500 rpm



Note: Pump power P include mechanical seal friction and bearing frame losses, from a run in bearing frame.
(Testing according ISO 9906:2012-38)