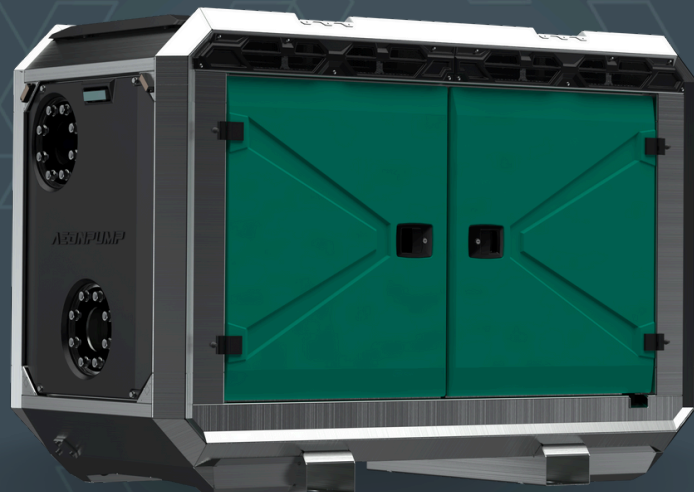


AEDONPUMP

RAPTOR 8D SUPERHEAVY



DIESEL

**DRIVEN SEWAGE
AND DEWATERING PUMP**

V1.25

FEATURES AND COMPETITIVE EDGE

Type: **Raptor 8D SUPERHEAVY**

Connection size: **8 in x 8 in**

Frame LxWxH: **2299x1100x1601 mm / 90.5x43.3x63 in**

Dry weight: **1950 kg / 4300 lbs**

Fuel tank capacity: **270 L / 70 US gal**

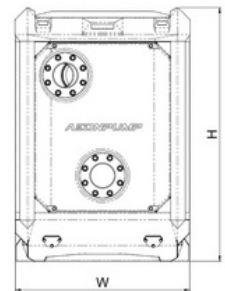
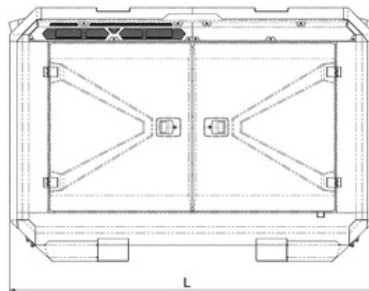
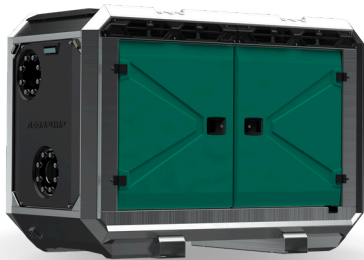
Consumption: **7 L/h / 1.9 gal/h**

Sound level: **76 dB at 10 m / 33 ft**

Designed for heavy duty applications.

Sewage bypass, drainage and dewatering:

- Extended maintenance intervals;
- High-grade parts of superior quality;
- Online telemetry and remote access capability;
- Unsurpassed efficiency values that set the industry standard.



PUMP TECHNICAL SPECIFICATION

Pump Max. flow: **600 m³/h / 2640 US gpm**

Max. head: **46 m / 150 ft / 65 PSI**

Impeller type: **Screw impeller**

Solids handling: **115 mm / 4.5 in**

Temperature: **max. 40°C / max 104°F**

Casing: **GG25 (0.6025)**

Impeller: **GGG60 (0.7060)**

Suction Liner: **GG20 (0.6020)**

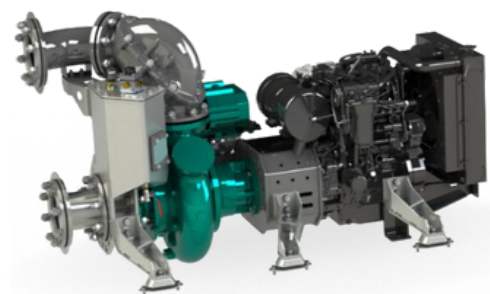
Wear Ring: **GG20 (0.6020)**

Shaft: **1.4021**

Shaft Sealing: **WC/SiC/NBR**

O-Rings: **NBR**

Suction liner adjustable by external regulation screws



Dual Vacuum pump System

Priming System Pump type: **dry claw vacuum pump**
Air handling capacity: **120 m³/h / 70 CFM**
Max. vacuum: **9.0 m / 30 ft**
Floatbox: **Hot dip galvanized Steel**
Non-return valve: **Ductile iron GJS400**
Check valve ball: **Rubber NBR**
Additional Vacuum pump: **120 m³/h / 70 CFM**
Total Air Capacity: **240 m³/h / 140 CFM**



ENGINE OPTIONS

Standard Model: **Hatz 4H50TIC**
Emission standard: **Stage V/ Tier 4f**
Cylinders: **4**
Displacement litres: **1.952 L / 119.12 cu.in.**
Bore and stroke: **84 x 88 mm / 3.31 x 3.46 in**
Maximum power: **28 kW / 38 hp @1700 rpm**
Variable speed: **1300 - 1700 rpm**
Combustion system: **High-pressure common rail direct injection**
Exhaust after treatment: **cEGR, DOC, DPF**



FRAME OPTIONS

Silent canopy

Canopy type: **Stackable**

Material: **Hot dip galvanized Steel**

Dimensions LxWxH: **2299x1100x1601 mm / 90.5x43.3x63 in**

Lifting point: **Single lifting point**

Forklift pockets: **Installed**



Open canopy

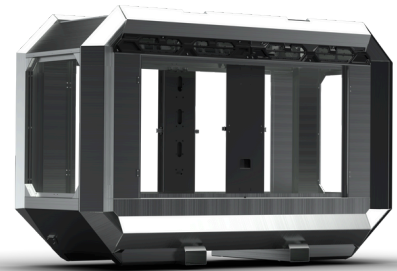
Canopy type: **Stackable**

Material: **Hot dip galvanized Steel**

Dimensions LxWxH: **2299x1100x1601 mm / 90.5x43.3x63 in**

Lifting point: **Single lifting point**

Forklift pockets: **Installed**



CONTROL PANEL OPTIONS

Standard

AEONPUMP Software

Automatic level control

Hydrostatic level sensor*

SMS alarm system*

Online telemetry*

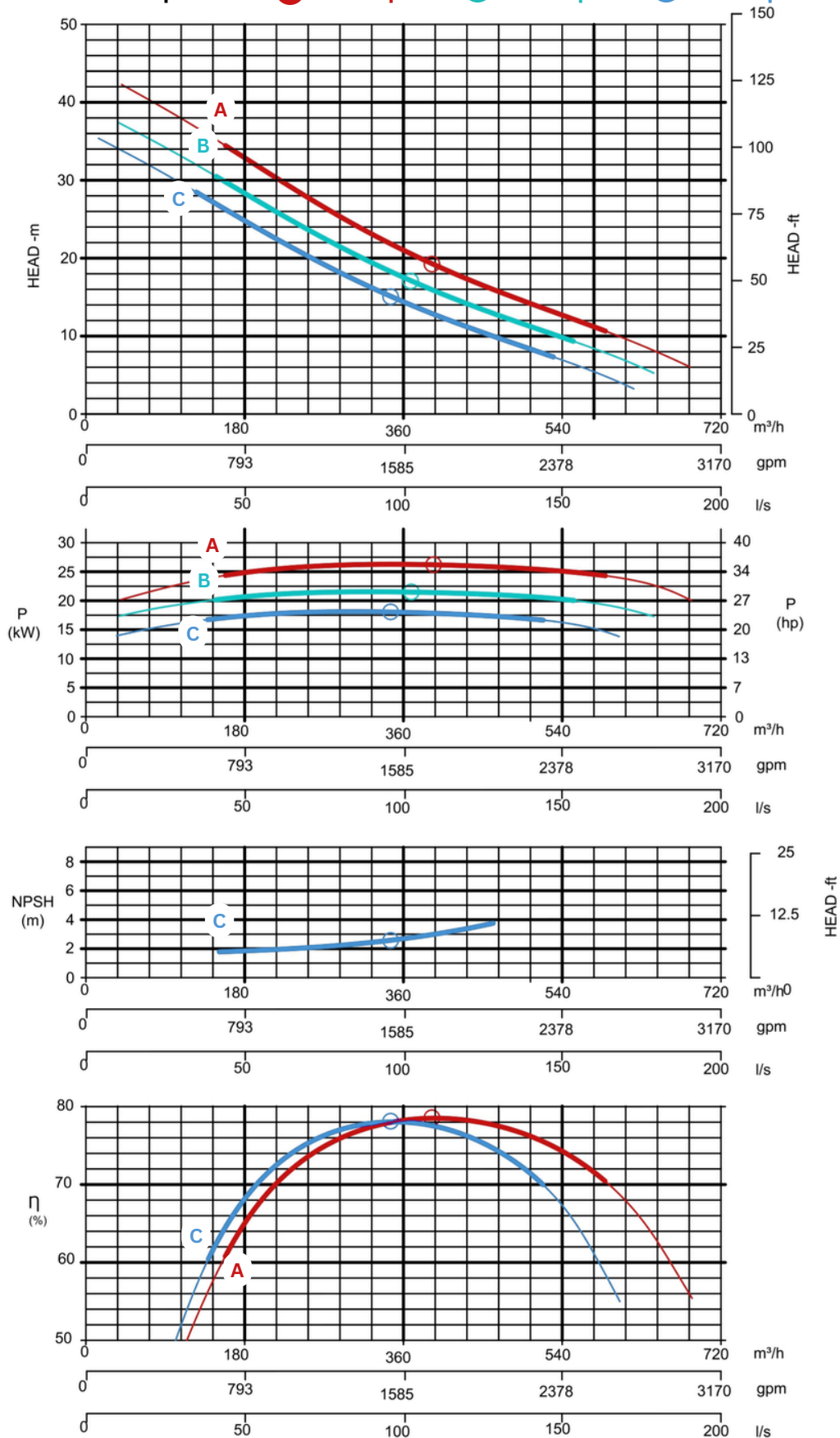
Dual float switch

Light Assistant*

* Optional



Curves at Speeds: A 1700 rpm B 1600 rpm C 1500 rpm



Note: Pump power P include mechanical seal friction and bearing frame losses, from a run in bearing frame.
(Testing according ISO 9906:2012-38)